

DMS TETRAD

WIRELESS MICROPHONE SYSTEM
SERVICE MANUAL
09/2015

Table of contents:

The complete DSM TETRAD family	3	Die komplette DMS TETRAD Familie
DHT TETRAD Digital handheld transmitter	4	DHT TETRAD Digitaler Handsender
DPT TETRAD Digital bodypack transmitter	7	DPT TETRAD Digitaler Taschensender
DSR TETRAD Digital stationary receiver	9	DSR TETRAD Digital Empfänger



DHT TETRAD D5
Digital handheld transmitter

DHT TETRAD P5
Digital handheld transmitter



DSR TETRAD
Digital stationary receiver



DPT TETRAD
Digital bodypack transmitter

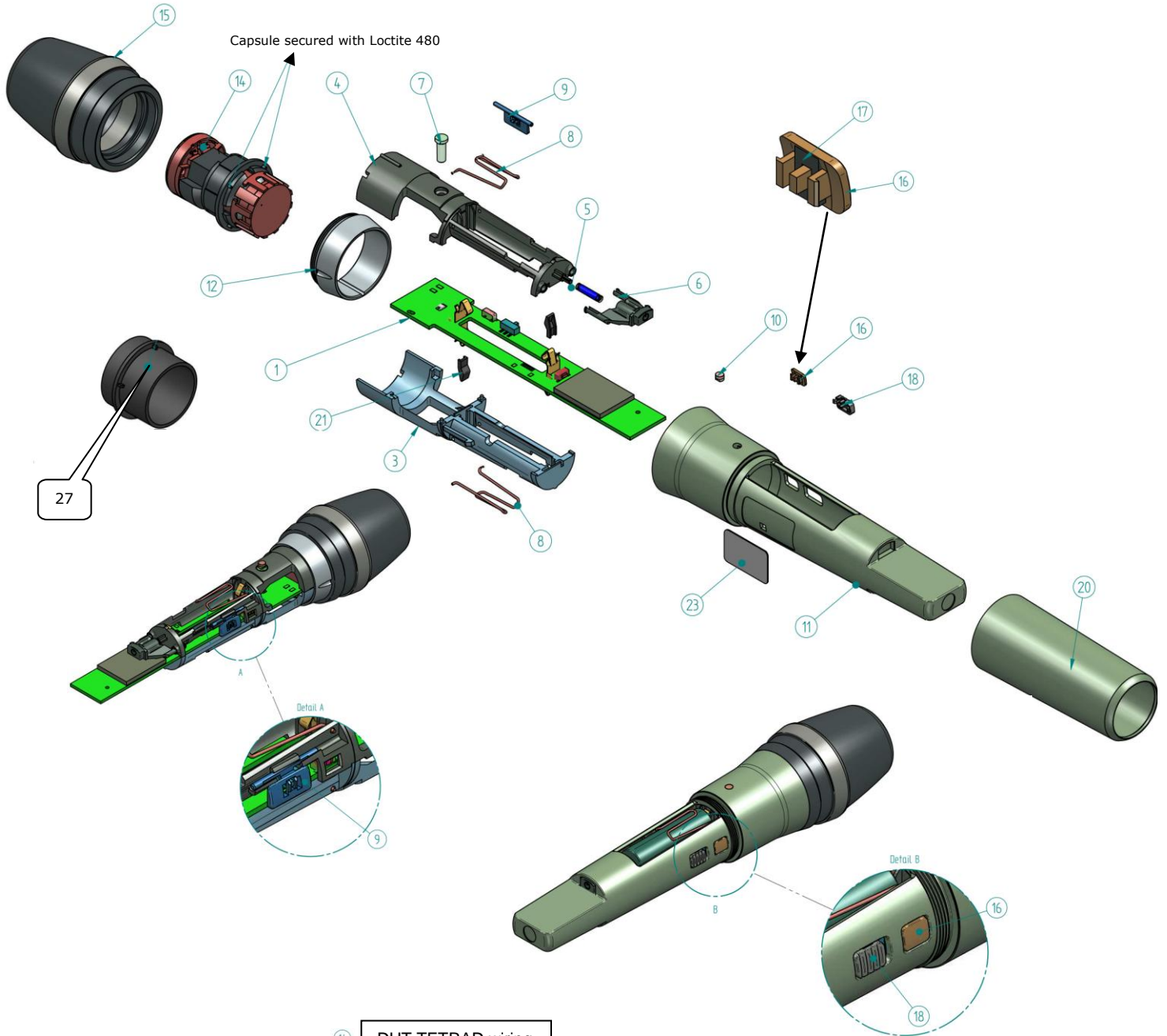
Power supply :
SMPS 12VDC/500mA pn : 7801H00130

Frequency range, Mhz,
2,4Ghz

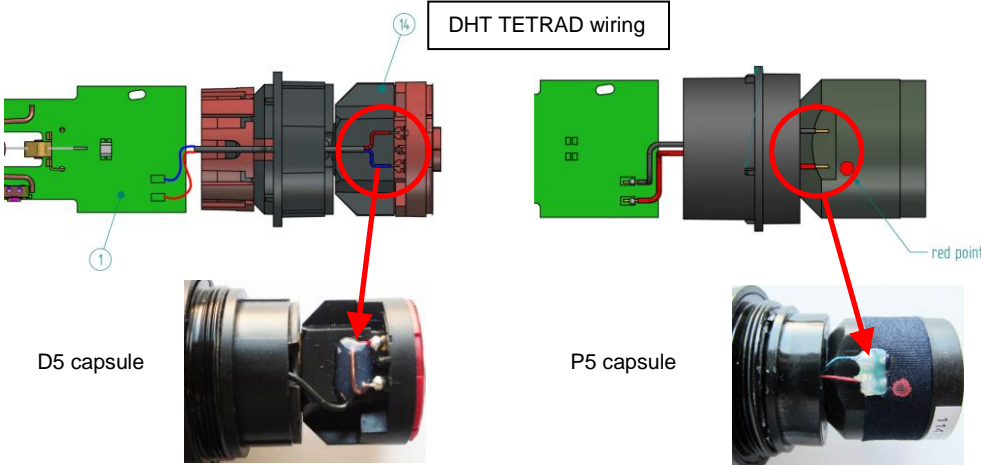
Website links:

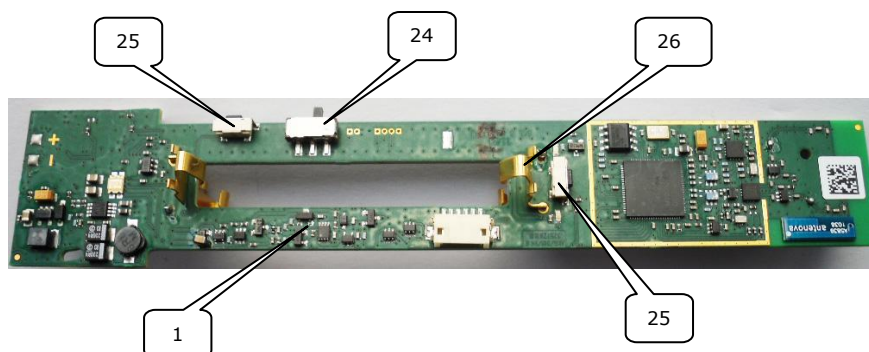
- [AKG TETRAD](#)
- [Cut sheet](#)

DHT TETRAD D5 2457X00020
DHT TETRAD P5 2457H00010



DHT TETRAD wiring





DHT TETRAD Parts list / Stückliste

Description	Pos.	Part number Bestellnummer	Quantity Stück		Bezeichnung
			D5	P5	
Mainboard	1	5048395	1	1	Print kompl.
Cage bottom	3	3257Z01020	1	1	Käfig Unterteil
Cage top	4	3257Z01030	1	1	Käfig Oberteil
Spring D016D-1	5	9999N07840	1	1	Feder D016D-1
On/Off button	6	3257Z01040	1	1	On/Off Knopf
Lightguide cage top	7	3257Z01050	1	1	Lichtleiter, Käfig Oberteil
Battery holder	8	3257Z01060	2	2	Batteriehalter
Slider	9	3257Z01070	1	1	Schieber
Light guide housing	10	3257Z01080	1	1	Lichtleiter, Gehäuse
Housing compl. P5/D5 (inkl. 10,12)	11	5048402	1	1	Gehäuse kompl. P5/D5 (inkl. 10, 12)
Capsule assy. D5	14	2610Z00060	1	-	Kapsel kompl. D5
Capsule assy. P5	14	1400M40010	-	1	Kapsel kompl. P5
Wire mash cap D5	15	3157M12040	1	-	Gitterkappe D5
Wire mash cap P5	15	3157M12050	-	1	Gitterkappe P5
Connect button*	16	3257Z01120	1	1	Connect Knopf*
Foam, connect button	17	3257Z01160	1	1	Schaumeinlage, Connect Knopf
Gain button	18	3257Z01130	1	1	Gain Knopf
Sleeve	20	3257Z01140	1	1	Hülse
Battery contact support	21	3257Z40010	2	2	Kontaktunterlage
Device sticker D5	23	5044454	1	-	Typenschild D5
Device sticker P5	23	5044455	-	1	Typenschild P5
SMD side type slide switch	24	9040E00060	1	1	SMD Schiebeschalter
SMD side type push switch	25	9040E00110	2	2	SMD Druckschalter
Battery contact	26	3257Z01150	4	4	Batteriekontakt
Capsule bearing P5	27	3357Z10010	1	1	Kapsellager P5
SA63 stand adapter	-	6001H63050	1	1	SA63 Stativadapter

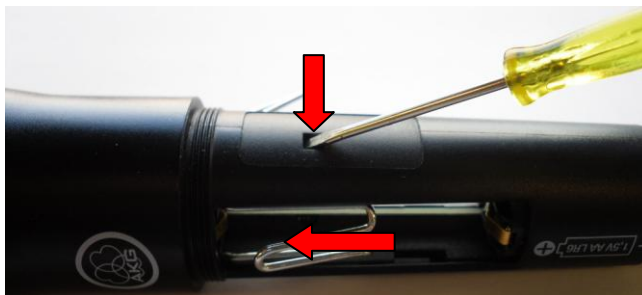
*Always use a new knob for reassemble the housing.

To dismantle the DHT TETRAD proceed as follows:

1. Remove battery sleeve (20), wire mesh cap (15), connect button (16), gain button (18), and device sticker (23);



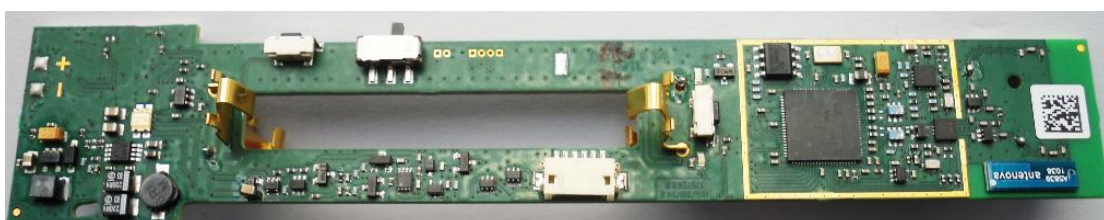
2. Open locking mechanism with small screw driver. Push inside cage out of the housing.



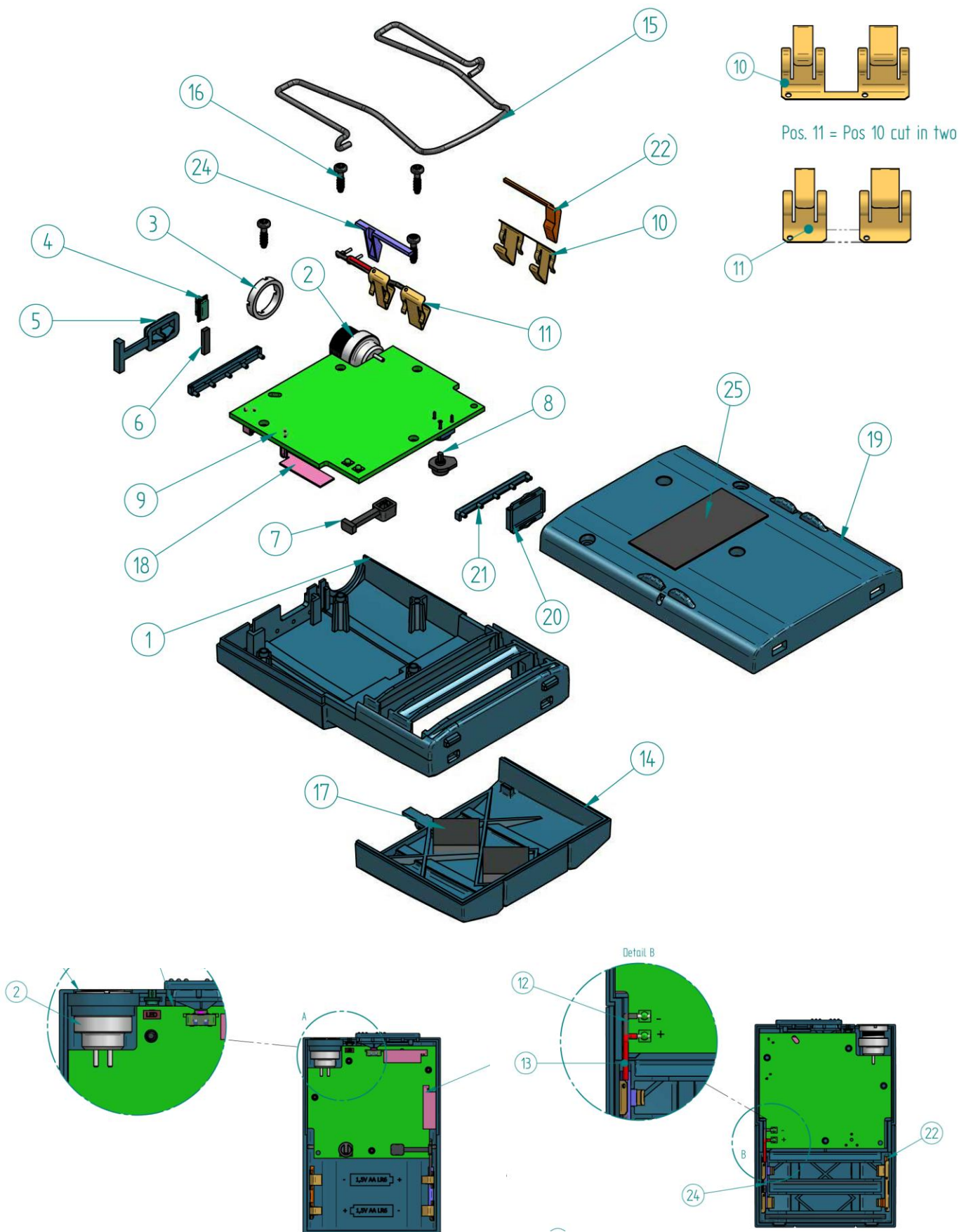
3. Remove cage bottom (3) and top (4) and unsolder capsule wires.

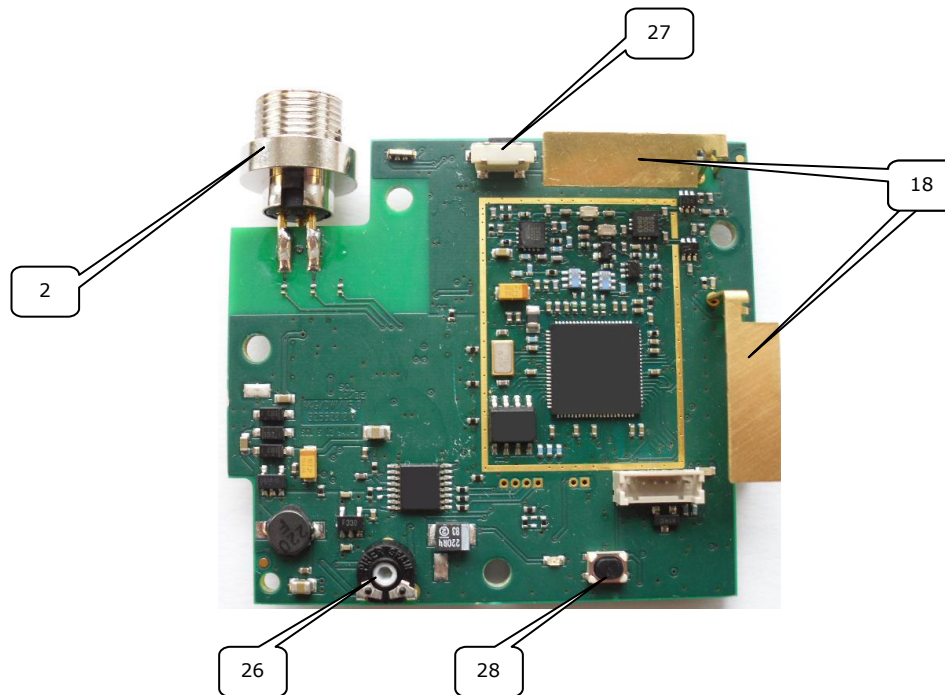


4. Mainboard



DPT TETRAD 3456H00010

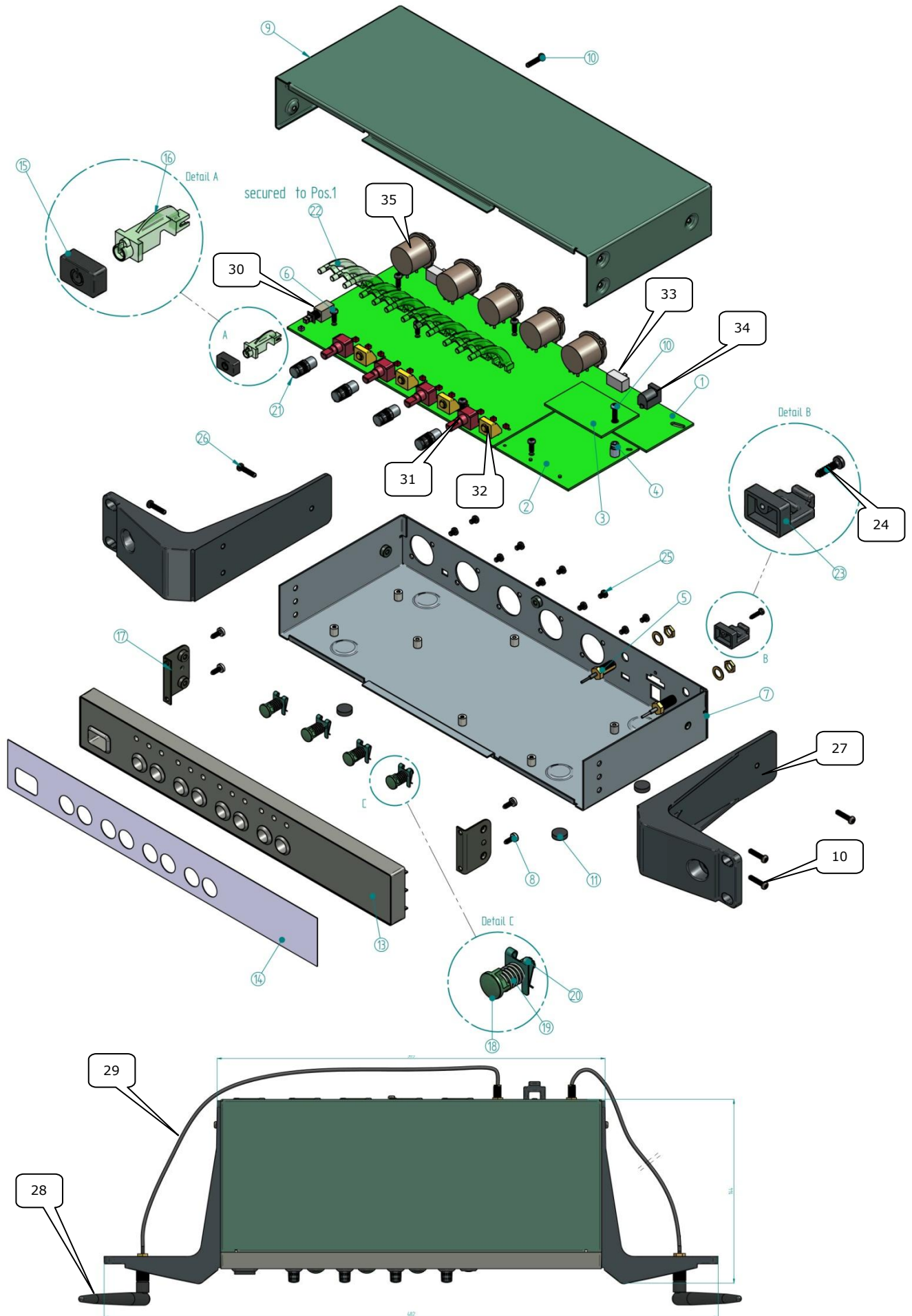




DPT TETRAD Parts list / Stückliste

<i>Description</i>	<i>Pos.</i>	<i>Part number Bestellnummer</i>	<i>Quantity Stück</i>	<i>Bezeichnung</i>
Housing top	1	3456Z10010	1	Gehäuse Oberenteil
Mini XLR	2	0016E18290	1	Mini XLR Buchse
Nut groove	3	2781Z20020	1	Mutter
Light guide	4	3256Z13010	1	Lichtleiter
On/Off button	5	3256Z14010	1	On/Off Knopf
Foam	6	3256Z31010	1	Schaumeinlage
Connect button	7	3256Z12010	1	Connect Knopf
Gain control knob	8	3256Z21010	1	Gain Drehknopf
Mainboard compl.	9	5048397	1	Print kompl.
Battery contact	10/11	3256Z20010	2	Batteriekontakt
Battery contact support right	22	3256Z40010	1	Kontaktunterlage links
Battery contact support left	24	3256Z41010	1	Kontaktunterlage rechts
Battery cover	14	3456Z17010	1	Batteriedeckel
Belt clip	15	3156Z25010	1	Gürtelspange
Screw EjoyPTKB 22x10	16	0099N22020	4	Schraube EjoyPTKB 22x10
Foam	17	3256Z26010	1	Schaumeinlage
Antenna	18	3256Z30010	2	Antenne
Housing bottom	19	3256Z18010	1	Gehäuse Unterteil
Cover	20	3256Z33010	1	Abdeckung
Guide	21	3256Z32010	2	Schienen für Abdeckung
Device sticker	25	5044465	1	Typenschild
Potentiometer, 20kOhm	26	0021E05980	1	Trimpoti
SMD side type push switch	27	9040E00110	1	SMD Tastschalter
SMD tact switch	28	9040E00150	1	SMD Tastschalter

DSR TETRAD 3455H00020



DSR TETRAD
Parts list / Stückliste

<i>Description</i>	<i>Pos.</i>	<i>Part number Bestellnummer</i>	<i>Quantity Stück</i>	<i>Bezeichnung</i>
Audio board	1	5048398	1	Audio Print
RF board	2	5048400	1	HF Print
DSP board	3	5048401	1	DSP Print
Spacer	4	5043674	1	Abstandshülse
RF connector cable 120	5	5043754	2	HF Kabel 120
Screw M3x8	6	7985D30040	7	Schraube M3x8
Housing bottom assy	7	3455M20010	1	Gehäuse Unterteil
Screw EJOT PT DG 30x8	8	0099N30180	4	Schraube EJOT PTDG 30x8
Housing top	9	3255Z10010	1	Gehäusedeckel
Screw M3x14	10	5046942	8	Schraube M3x14
Housing foot	11	9999N06930	4	Gehäusefuß
Front	13	3455Z13010	1	Frontteil
Front foil	14	3455Z11010	1	Frontfolie
On/Off button	15	3255Z12010	1	On/Off Knopf
Lightguide (On/Off button)	16	3255Z14010	1	Lichtleiter (On/Off Knopf)
Angle assy.	17	3255M03010	2	Winkel
Push button	18	3255Z15010	4	Druckknopf
Spring	19	9999N07850	4	Feder
Clip	20	9999N07860	4	Sicherungsclip
Knob	21	3255Z17010	4	Knopf
Light guide status	22	3255Z19010	4	Lichtleiter
Strain relief	23	2889Z21010	1	Zugentlastung
Screw EJOT PT KB 25x6	24	0099N25030	1	Schraube EJOT PT KB 25x6
Screw EJOT PT KB 30x8	25	0099N30080	10	Schraube EJOT PT KB 30x8
Washer (for 10)	26	0128D03000	7	Scheibe (für 10)
Rack mount	27	3455Z16010	2	Rackwinkel
Antenna SMA	28	5025582	2	Antenne SMA
RF connector cable 500	29	5043755	2	HF Kabel 500
On/Off switch	30	0040E02180	1	ON/Off Schalter
Potentiometer, 10kOhm	31	0021E06000	4	Potentiometer, 10kOhm
Push button switch	32	0040E06520	4	Druckschalter
Slide switch 3pos	33	0040E01990	1	Schiebeschalter
3p DC Jack socket 6,4mm	34	0016E03730	1	3p DC-Buchse 6,4mm
XLR-socket	35	0016E03690	5	XLR-Buchse
Power supply 12VDC/500mA	-	7801H00130	1	Netzteil 12V/500mA